

105mm

148.5mm

**MANUAL**  
 MODEL  
**Ptero Q2 / Q2+  
 Ptero Q2W / Q2W+**

**EVOLVEO®**  
 VERSION / DATE  
**I. / 20.06.2023**



EN

### Installation manual



Open the left and right panels with the screws Pull the front panel out from the bottom

### Installing the motherboard

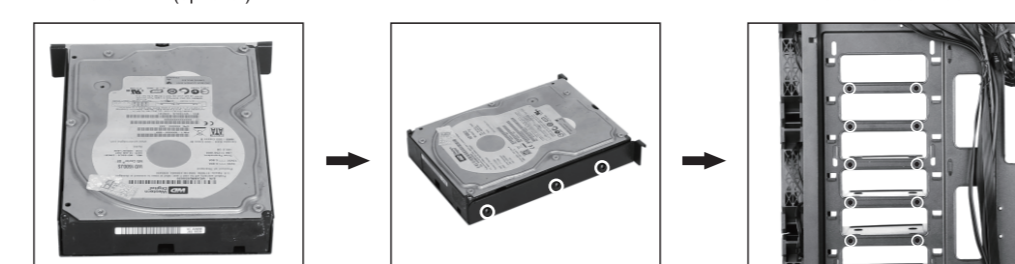


Motherboard location Insert the I/O connectors into the I/O slot Place the motherboard in place and secure it with screws

### Installation of 2.5" SSD and 3.5" HDD next to the motherboard (optional)

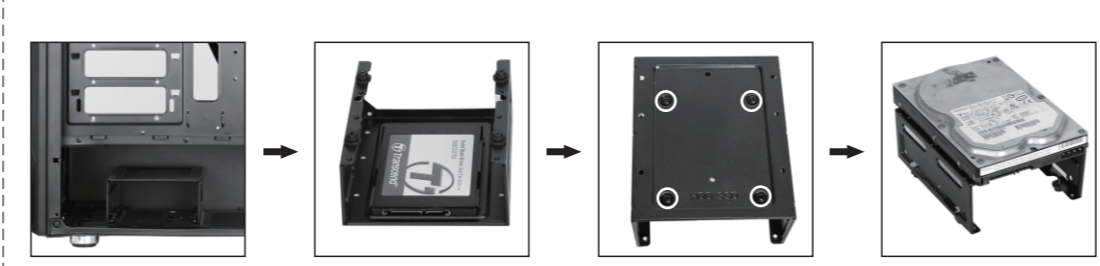


Support for six 2.5" SSDs or 3.5" HDD (optional) Place the SSD in place Secure the SSD with MB screws from the back side

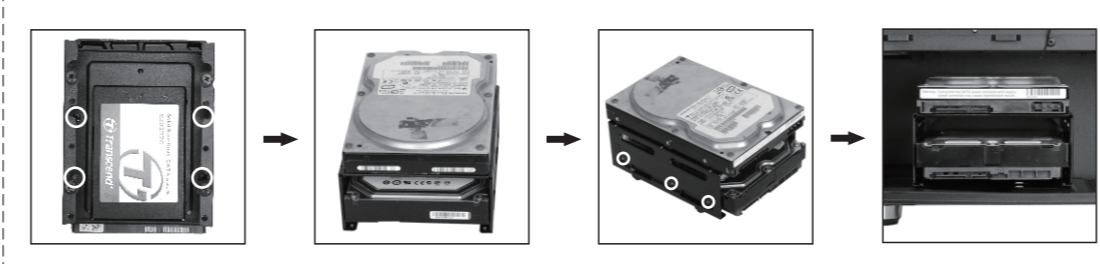


Put the HDD in place Screw the HDD into the frame using the screws on the sides Mount the SSD or HDD bracket into place

### Installation of 2.5" SSD and 3.5" HDD on the bottom bracket

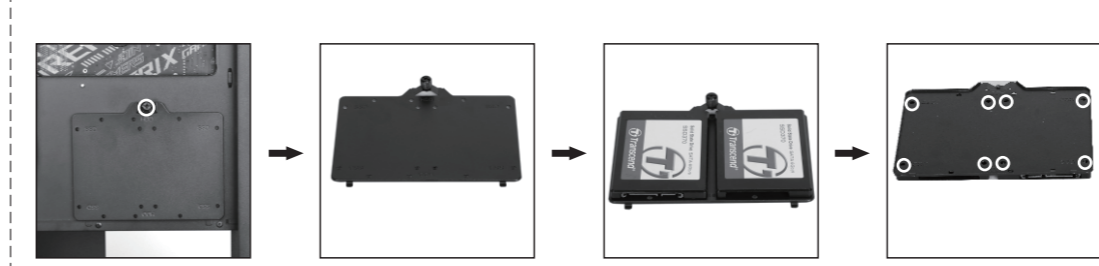


You remove the holder from the the bottom of the case Place the SSD in place Secure the SSD with screws Place the HDD in the location on the top of the bracket

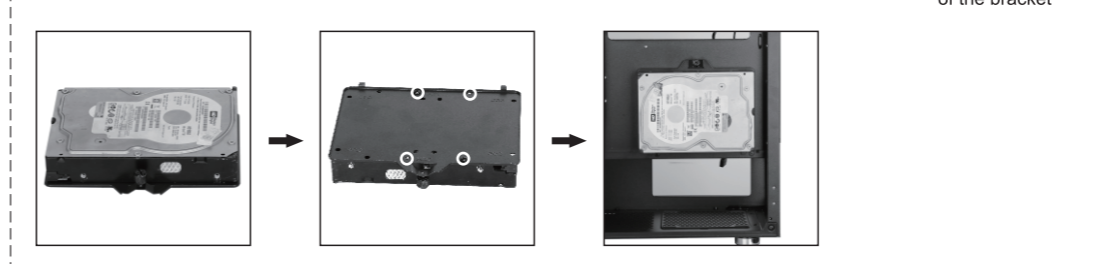


Secure the HDD using screws from the inside Slide the HDD into the holder Secure the HDD with the screws HDD from the sides Insert the bracket back into the the bottom of the case

### Installation of 2.5" SSD and 3.5" HDD on the motherboard bracket

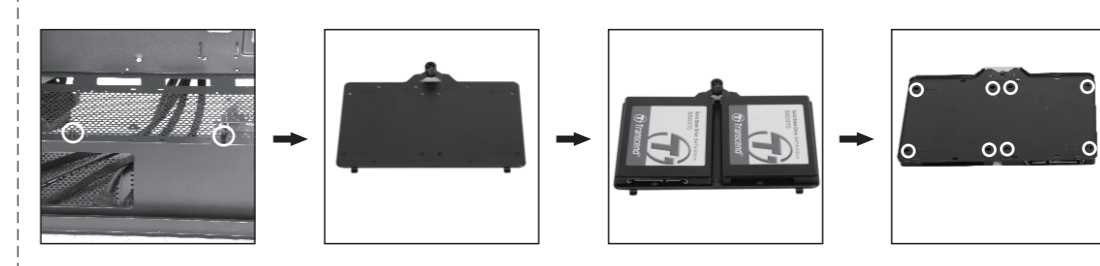


Remove the holder Place 1x 3.5" HDD or 2x2.5" SSD into the bracket Attach them with screws MB from the back of the bracket

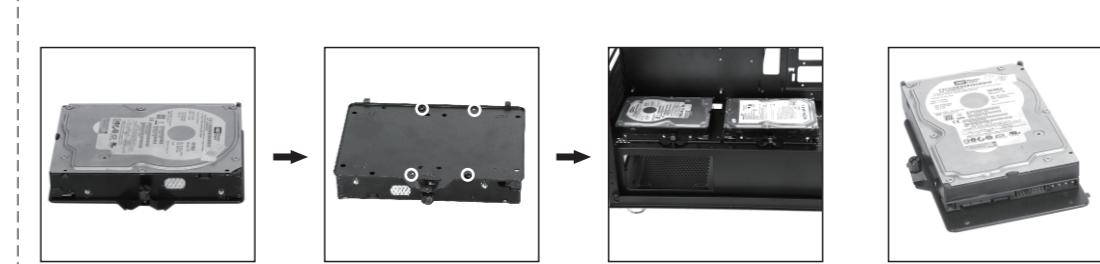


Insert 1x33 HDD into the holder Secure it with screws on the back of the holder Secure the bracket with the screws into the enclosure

### Installation of 2.5" SSDs and a 3.5" HDD on the PSU enclosure

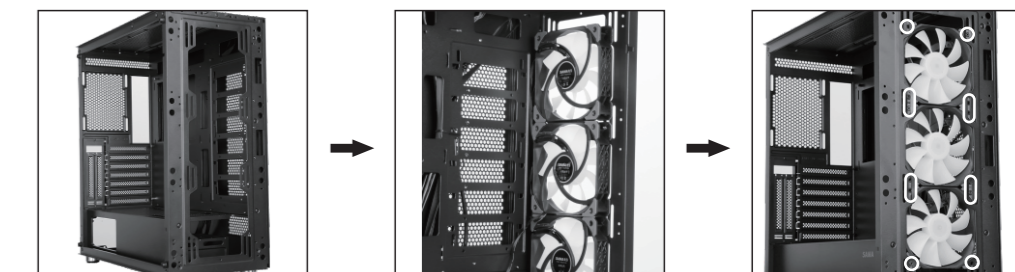


1x 2.5" HDD or 2x 3.5" SSD Unscrew the screws and remove the bracket Insert 2x 2.5" SSD into the bracket Fasten them with the screws MB from the back of the bracket

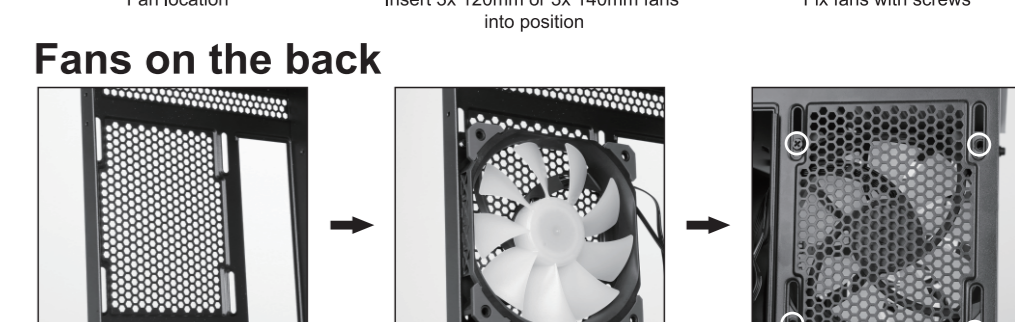


Insert 1x 3.5" HDD into the holder Secure it with screws on the back of the holder Secure the bracket with the screws Left HDD as shown

### Fans on the front

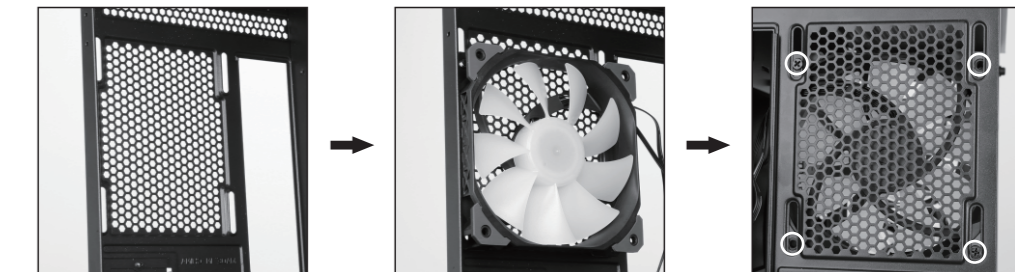


Fan location Insert 3x 120mm or 3x 140mm fans into position Fix fans with screws



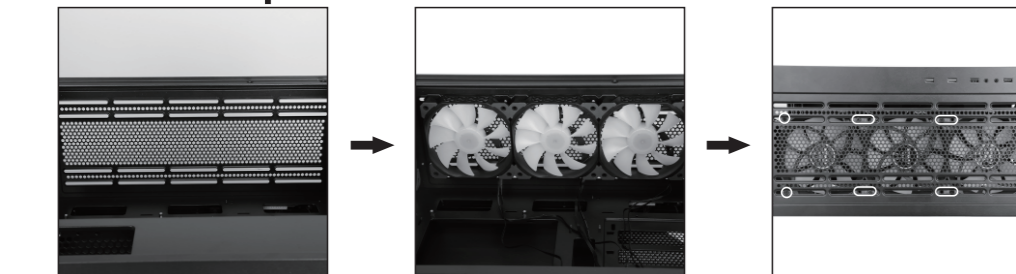
Fan location Insert 1x 120mm fan in position Fix fans with screws

### Fans on the back

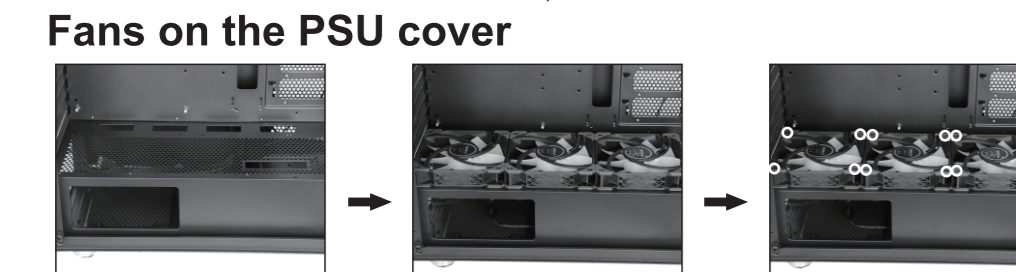


Fan location Insert 1x 120mm fan in position Fix fans with screws

### Fans on top

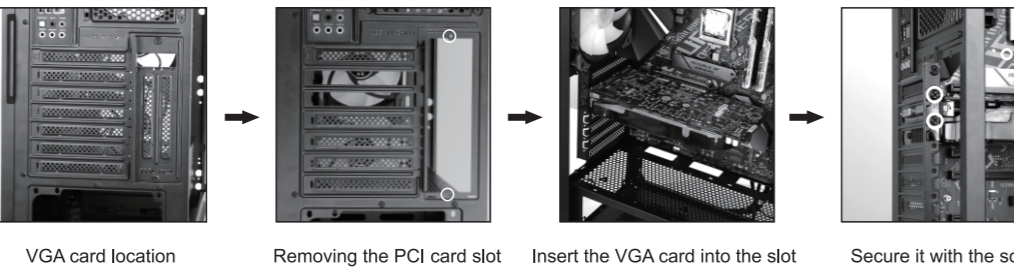


Fan position Insert 3x 120mm or 2x 140mm fans into place Fixing the fans with screws



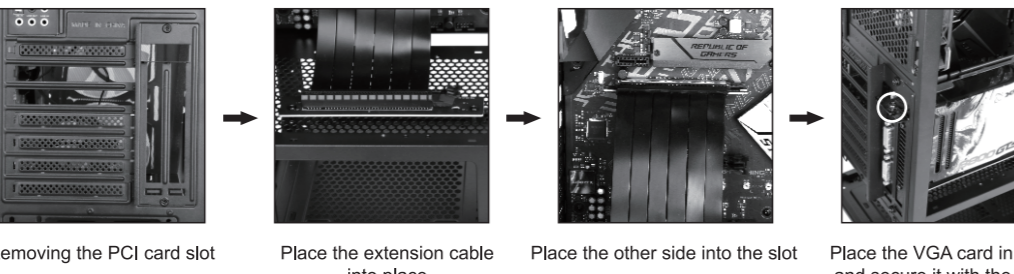
Fan position Insert 3x 120mm fans into place Fix the fans with long screws from the top of the fan

### Transverse installation of a VGA card



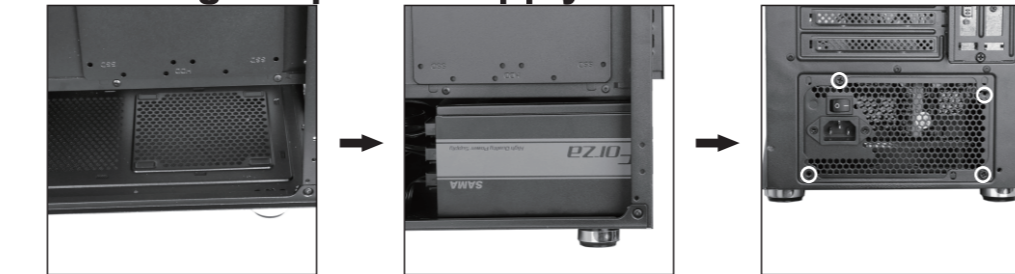
VGA card location Removing the PCI card slot Insert the VGA card into the slot Secure it with the screws

### Vertical installation of the VGA card



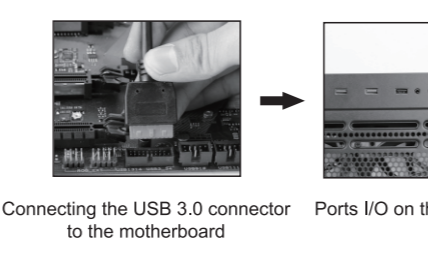
Removing the PCI card slot Place the extension cable into place Place the other side into the slot Place the VGA card in the slot and secure it with the screws

### Installing the power supply



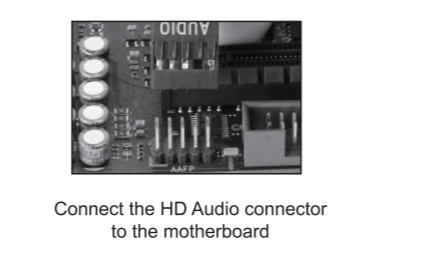
Power supply location Place the power supply in position Secure it with the screws

### USB 3.0 installation



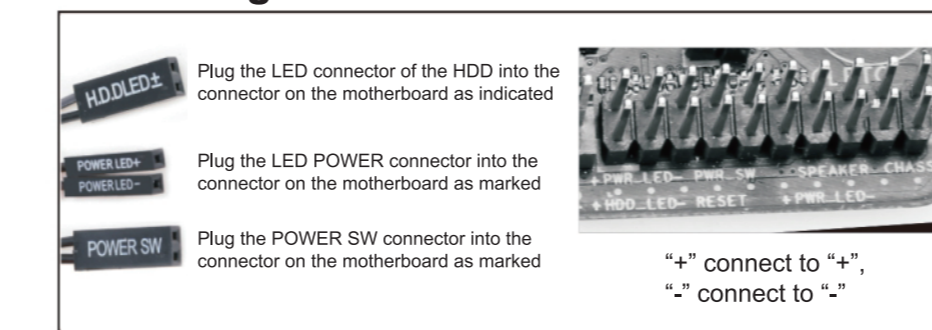
Connecting the USB 3.0 connector to the motherboard Ports I/O on the top side

### HD audio installation



Connect the HD Audio connector to the motherboard

### Connecting cables



Plug the LED connector of the HDD into the connector on the motherboard as indicated Plug the LED POWER connector into the connector on the motherboard as marked Plug the POWER SW connector into the connector on the motherboard as marked

"+" connect to "+",  
 "-" connect to "-"

### Two front panels are included:

- mesh
- glass

The dust filter and the front panels are attached with magnets, making it easy to customize the look of the computer case.

### Specifications:

- 4 ports x 5V ARGB 3pin fan connector
- 4 ports x standard 3pin FAN fan connector
- 2ports x 3pin LED strip connector
- 1 port x 5V ARGB 3pin MB connection
- 1 port x SATAconnection to power supply
- 1 port x 2pin connection to LED switch

### Features:

- Manual control by pressing the LED button
- Press the LED button for 3 seconds to change the mode on the control base plate
- Press the LED button for 5 seconds to turn off the LED power
- Press the LED button to return to manual control with LED button
- Up to 4pcs ARGB fans and 2pcs LED strips can be connected.
- Random RGB effect from the first start

### Computer case cooling

Ptero Q2+ and Q2W+ have the following fans installed:  
 3x 120mm ARGB - front  
 1x 120mm ARGB - rear

One of the above mentioned fans is called MASTER and this fan is connected to the LED button on the top of the computer case. The other three fans called SLAVE are connected to the MASTER fan. The Ptero Q2+ and Q2W+ computer cases also include an ARGB cable for connecting fan control to the motherboard.

Manual control of the LED fans using the LED button



### Disposal

The crossed-out container symbol on the product, in the enclosed documentation or on packaging means that all the electric and electronic equipment, batteries and storage cells in the European Union must be disposed of as sorted waste at the end of their service life. These products must not be disposed as unsorted municipal waste.

### DECLARATION OF COMPLIANCE

Abacus Electric, s.r.o. hereby declares that the EVOLVEO Ptero Q2, Q2+, Q2W, Q2W+ complies with the requirements of standards and regulations relevant for this type of device.

For the full wording of the Declaration of Compliance see <http://ftp.evolveo.com/ce/>

Importer / Manufacturer  
 Abacus Electric, s.r.o.  
 Pláná 2, 370 01, Czech Republic  
 Made in China

Copyright © Abacus Electric, s.r.o.  
[www.evolveo.com](http://www.evolveo.com), [www.facebook.com/EvolveoCZ](https://www.facebook.com/EvolveoCZ)

All rights reserved. Product appearance and technical specifications are subject to changes without prior notice.